

BOX SCORE: *** FINAL ***

Date: 03-24-88 Site: State Tourney, Frankfort Attendance: 3,850

Team: Boone County

| NO. | NAME | TOTAL FG | | 3-POINT | | FT | FTA | REB | | | PF | TP | A | TO | BLK | S | MIN |
|--------|------------------|----------|-----|---------|-----|----|-----|-----|----|----|----|----|---|----|-----|---|-----|
| | | FG | FGA | FG | FGA | | | O | D | T | | | | | | | |
| 15 | Nickerson, Jill | 3 | 8 | 0 | 0 | 4 | 5 | 2 | 13 | 15 | 2 | 10 | 1 | 9 | 0 | 2 | 29 |
| 30 | Poland, Michelle | 2 | 4 | 0 | 0 | 0 | 0 | 3 | 4 | 7 | 3 | 4 | 0 | 3 | 0 | 0 | 28 |
| 22 | Davis, Amy | 2 | 9 | 0 | 0 | 1 | 2 | 3 | 8 | 11 | 2 | 5 | 0 | 3 | 1 | 1 | 32 |
| 21 | Pennington, L.A. | 3 | 11 | 0 | 0 | 5 | 6 | 1 | 4 | 5 | 2 | 11 | 1 | 2 | 0 | 3 | 29 |
| 44 | Murphy, Sara | 0 | 1 | 0 | 0 | 0 | 0 | 0 | 0 | 0 | 1 | 0 | 0 | 0 | 0 | 0 | 10 |
| 10 | Morrison, Julie | 5 | 12 | 0 | 0 | 5 | 8 | 3 | 0 | 3 | 2 | 15 | 2 | 3 | 0 | 1 | 24 |
| 35 | Rich, Amy | 2 | 5 | 0 | 0 | 1 | 1 | 2 | 1 | 3 | 1 | 5 | 0 | 0 | 0 | 0 | 8 |
| TEAM | | | | | | | | 1 | 1 | 1 | | | | | | | |
| TOTALS | | 17 | 50 | 0 | 0 | 16 | 22 | 14 | 31 | 45 | 13 | 50 | 4 | 20 | 1 | 7 | 160 |

| Percentages: | Game | FG | 17/50 | 34.0% | 3-PT. | 0/0 | 0.0% | FT | 16/22 | 72.7% |
|--------------|------|------|-------|-------|-------|-------|--------|----|-------|-------|
| Period 1 | 1 | 7/16 | 43.8% | 0/0 | 0.0% | 1/3 | 33.3% | | | |
| Period 2 | 2 | 5/13 | 38.5% | 0/0 | 0.0% | 2/3 | 66.7% | | | |
| Period 3 | 3 | 3/15 | 20.0% | 0/0 | 0.0% | 2/2 | 100.0% | | | |
| Period 4 | 4 | 2/6 | 33.3% | 0/0 | 0.0% | 11/14 | 78.6% | | | |

Team: East Hardin

| NO. | NAME | TOTAL FG | | 3-POINT | | FT | FTA | REB | | | PF | TP | A | TO | BLK | S | MIN |
|--------|-----------------|----------|-----|---------|-----|----|-----|-----|----|----|----|----|----|----|-----|---|-----|
| | | FG | FGA | FG | FGA | | | O | D | T | | | | | | | |
| 30 | Gonterman, S. | 3 | 10 | 0 | 1 | 0 | 0 | 3 | 3 | 6 | 5 | 6 | 0 | 3 | 0 | 2 | 31 |
| 52 | Kuchowicz, R. | 5 | 14 | 0 | 0 | 1 | 4 | 3 | 7 | 10 | 5 | 11 | 1 | 4 | 0 | 0 | 31 |
| 44 | Jeffries, Betsy | 4 | 12 | 0 | 0 | 2 | 3 | 3 | 12 | 15 | 2 | 10 | 1 | 2 | 2 | 1 | 32 |
| 11 | Knight, Leslie | 0 | 0 | 0 | 0 | 0 | 0 | 0 | 0 | 0 | 3 | 0 | 1 | 1 | 0 | 0 | 11 |
| 21 | Gillock, Chanin | 2 | 10 | 0 | 0 | 0 | 0 | 2 | 0 | 2 | 0 | 4 | 7 | 1 | 0 | 3 | 32 |
| 14 | Brawner, Cathy | 6 | 14 | 1 | 2 | 1 | 4 | 1 | 1 | 2 | 2 | 14 | 3 | 2 | 0 | 2 | 21 |
| 25 | Hill, Gretchen | 0 | 0 | 0 | 0 | 0 | 0 | 0 | 0 | 0 | 0 | 0 | 0 | 0 | 0 | 0 | 1 |
| 40 | Hornback, R. | 0 | 0 | 0 | 0 | 0 | 0 | 0 | 0 | 0 | 0 | 0 | 0 | 0 | 0 | 0 | 1 |
| TEAM | | | | | | | | 2 | 1 | 3 | | | | | | | |
| TOTALS | | 20 | 60 | 1 | 3 | 4 | 11 | 14 | 24 | 38 | 17 | 45 | 13 | 13 | 2 | 8 | 160 |

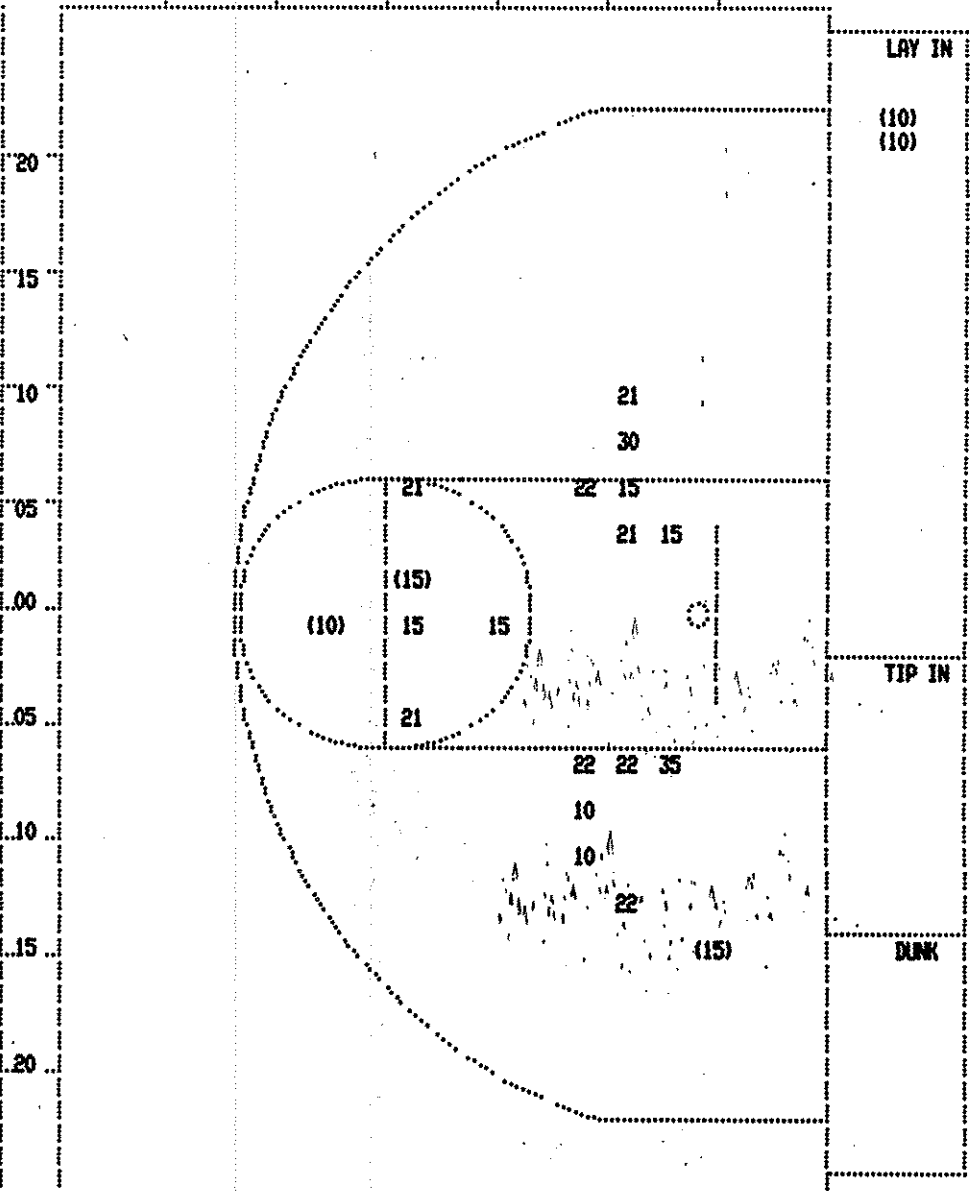
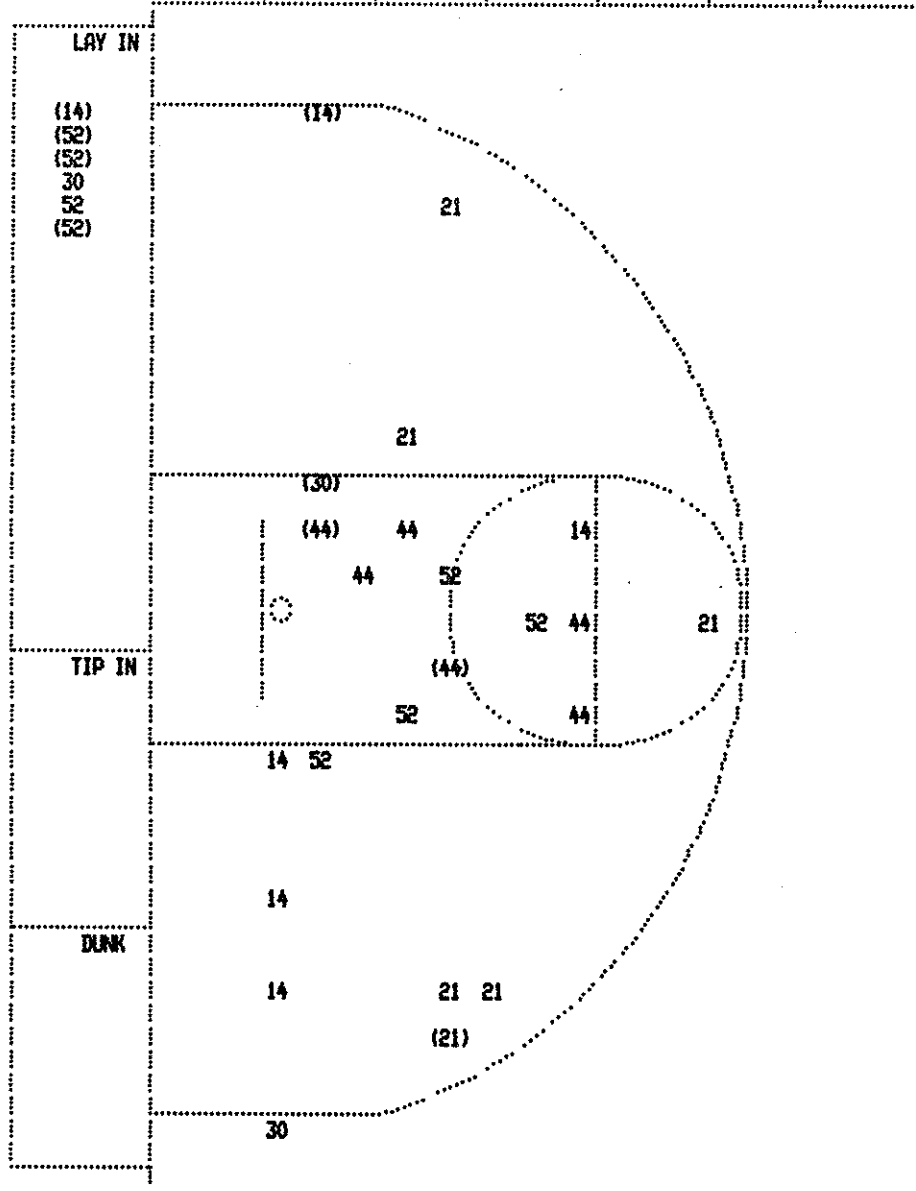
| Percentages: | Game | FG | 20/60 | 33.3% | 3-PT. | 1/3 | 33.3% | FT | 4/11 | 36.4% |
|--------------|------|------|-------|-------|-------|-----|-------|----|------|-------|
| Period 1 | 1 | 6/15 | 40.0% | 0/0 | 0.0% | 0/3 | 0.0% | | | |
| Period 2 | 2 | 5/16 | 31.3% | 0/0 | 0.0% | 2/4 | 50.0% | | | |
| Period 3 | 3 | 3/12 | 25.0% | 0/1 | 0.0% | 0/0 | 0.0% | | | |
| Period 4 | 4 | 6/17 | 35.3% | 1/2 | 50.0% | 2/4 | 50.0% | | | |

OFFICIALS: Jan Baker, Jackie Cupp, Alt.-S. Higdon
 Technicals: None

| SCORE BY PERIODS | | | | | |
|------------------|----|----|---|----|------|
| Boone County | 15 | 12 | 8 | 15 | = 50 |
| East Hardin | 12 | 12 | 6 | 15 | = 45 |

Produced by the K.H.S.A.A. Stat Crew with FINAL III™

SECOND HALF SHOT CHART Produced by the K.H.S.A.A. Stat Crew with FINAL III™



| East Hardin | | | | Player | | |
|-----------------|--------|----------|------------|------------|--------|--|
| 30 - Bonterman, | 1 / 3 | 33.3% | Player | Player | | |
| 52 - Kuchowicz, | 3 / 8 | 37.5% | | | | |
| 44 - Jeffries, | 2 / 6 | 33.3% | | | | |
| 21 - Billock, C | 1 / 6 | 16.6% | | | | |
| 14 - Bramer, C | 2 / 6 | 33.3% | | | | |
| Layups | 1-9 Ft | 10-15 Ft | Over 15 Ft | 3 Pointers | Total | |
| 4 / 6 | 3 / 10 | 0 / 4 | 1 / 6 | 1 / 3 | 9 / 29 | |
| 66.7% | 30.0% | 0.0% | 16.7% | 33.3% | 31.0% | |

| Boone County | | | | Player | | |
|------------------|--------|----------|------------|------------|--------|--|
| 15 - Nickerson, | 2 / 6 | 33.3% | Player | Player | | |
| 30 - Poland, Mic | 0 / 1 | 0.0% | | | | |
| 22 - Davis, Amy | 0 / 4 | 0.0% | | | | |
| 10 - Morrison, | 3 / 5 | 60.0% | | | | |
| 21 - Pennington | 0 / 4 | 0.0% | | | | |
| Layups | 1-9 Ft | 10-15 Ft | Over 15 Ft | 3 Pointers | Total | |
| 2 / 2 | 0 / 10 | 2 / 8 | 1 / 1 | | 5 / 21 | |
| 100.0% | 0.0% | 25.0% | 100.0% | | 23.8% | |

Boone County "Lady Rebels" vs East Hardin "Lady Rebs"
2nd Half Play by Play

Tip off at 7:30 p.m. on 03/24/88 at State Tourney, Frankfort
Produced by the K.H.S.A.A. Stat Crew with FINL III™

PAGE : 2

| Player | Team | East Hardin | Time | Score | Boone County | Player | Team |
|--|------------|---|---|--------------------|---|--------|-------------------|
| Gonterman, S., Kuchowicz, R., Jeffries, Betsy, Knight, Leslie, Gillock, Chanin | | | | | Morrison, Julie, Pennington, L.A., Poland, Michelle, Nickerson, Jill, Davis, Amy Ball to Lady Rebels | | |
| 1 | 4 | Foul on Knight, Leslie | 4 7:46 | | | | |
| 3-8 | 37.5% | 15-44 34.0% | 4 ft Lane Jump shot by Jeffries, Betsy | 4 7:46 30-37* | Pennington, L.A., 2 Free Throws made both | 2-2 | 100% 7-10 70.0% |
| 6 | 9 | Assist by Gillock, Chanin | 4 7:16 | *32-37 | | | |
| | | | 4 6:37 | | Sub In: Murphy, Sara Out: Nickerson, Jill | | |
| | | | 4 6:37 | 32-39* | 16 ft Circle Jump shot by Morrison, Julie | 4-11 | 36.3% 16-47 34.0% |
| | | | 4 6:10 | | Foul on Morrison, Julie | 2 | 2 |
| | | | 4 6:10 | | Sub In: Nickerson, Jill Out: Murphy, Sara | | |
| 1-4 | 25.0% | 3-9 33.3% | Kuchowicz, R., 2 Free Throws missed 1st made 2nd | 4 6:10 *33-39 | | | |
| 4 | 5 | Foul on Gonterman, S. | 4 5:38 | 33-41* | Follow Layup by Morrison, Julie | 5-12 | 41.6% 17-49 34.6% |
| | | | 4 5:26 | | | | |
| | | REB: 30 A: 9 BLK: 2 TO: 13 PF: 5 | 4 5:26 | | REB: 38 A: 4 BLK: 1 TO: 15 PF: 2 | | |
| | | S: 5 FT: 3-9 33.3% FG: 15-45 33.3% | No. 2 East Hardin | T I M E - O U T | S: 7 FT: 7-10 70.0% FG: 17-49 34.6% | | |
| | | | 4 5:26 | 33-43* | Morrison, Julie, 1 & Bonus made both | 5-7 | 71.4% 9-12 75.0% |
| 2 | 6 | Foul on Knight, Leslie | 4 5:07 | | Foul on Poland, Michelle | 2 | 3 |
| | | | 4 5:03 | | | | |
| 5-12 | 41.6% | 16-47 34.0% | Driving Layup by Kuchowicz, R. | 4 5:03 | Nickerson, Jill, 1 & Bonus missed 1st | 0-1 | 00.0% 9-13 69.2% |
| 1 | 10 | Assist by Jeffries, Betsy | 4 4:46 | *35-43 | | | |
| | | | 4 4:06 | | | | |
| | | REB: 32 A: 10 BLK: 2 TO: 13 PF: 6 | 4 4:06 | | REB: 40 A: 4 BLK: 1 TO: 15 PF: 3 | | |
| | | S: 5 FT: 3-9 33.3% FG: 16-48 33.3% | T I M E - O U T | Boone County No. 2 | S: 7 FT: 9-13 69.2% FG: 17-50 34.0% | | |
| 2-8 | 25.0% | 17-49 34.6% | 19 ft Left Side Jump shot by Gillock, Chanin, made | 4 3:58 | *37-43 | | |
| 1 | 11 | Assist by Knight, Leslie | 4 3:39 | | | | |
| 1 | 7 | Steal by Gillock, Chanin | 4 3:39 | | Bad Pass by Nickerson, Jill | 8 | 17 |
| | | | 4 3:39 | | Foul on Poland, Michelle | 3 | 4 |
| 3-9 | 33.3% | 17-50 34.0% | 12 ft Lane Jump shot by Jeffries, Betsy, missed | 4 3:29 | | | |
| | | | 4 3:26 | | Rebound by Nickerson, Jill | D-1 | Tot-1 D-1 Tot-41 |
| | | | 4 3:26 | | Traveling Violation on Poland, Michelle | 2 | 18 |
| 2-9 | 22.2% | 17-51 33.3% | 17 ft Left Side Jump shot by | 4 3:20 | | | |
| | | | Gillock, Chanin, missed | 4 3:17 | | | |
| 0-1 Tot-1 | 0-1 Tot-33 | | Rebound by Kuchowicz, R. | 4 3:17 | | | |
| 5-13 | 38.4% | 17-52 32.6% | 6 ft Lane Follow by Kuchowicz, R., missed | 4 3:15 | | | |
| 0-1 Tot-1 | 0-2 Tot-34 | | Rebound by Gonterman, S. | 4 3:15 | *39-43 | | |
| 3-10 | 30.0% | 18-53 33.9% | 6 ft Lane Follow by Gonterman, S., made | 4 3:00 | | | |
| | | | | 4 2:30 | Bad Pass by Poland, Michelle | 3 | 19 |
| 3-10 | 30.0% | 18-54 33.3% | 13 ft Lane Jump shot by Jeffries, Betsy, missed | 4 2:27 | | | |
| | | | | 4 2:27 | Rebound by Poland, Michelle | D-1 | Tot-1 D-2 Tot-42 |
| 2 | 8 | Steal by Gillock, Chanin | 4 2:05 | | | | |
| | | | | 4 2:05 | Out-of-Bounds by Nickerson, Jill | 9 | 20 |
| | | | | 4 2:03 | | | |
| 5-13 | 38.4% | 18-55 32.7% | Sub In: Bramer, Cathy Out: Knight, Leslie | 4 1:50 | | | |
| | | | 12 ft Left Base Line Driving by Bramer, Cathy, missed | 4 1:49 | | | |
| | | | | 4 1:34 | Rebound by Poland, Michelle | D-2 | Tot-2 D-3 Tot-43 |
| 3 | 7 | Foul on Kuchowicz, R. | 4 1:34 | | | | |
| | | | 4 1:34 | | | | |
| | | REB: 34 A: 11 BLK: 2 TO: 13 PF: 7 | 4 1:34 | | REB: 43 A: 4 BLK: 1 TO: 20 PF: 4 | | |
| | | S: 8 FT: 3-9 33.3% FG: 18-55 32.7% | No. 3 East Hardin | T I M E - O U T | S: 7 FT: 9-13 69.2% FG: 17-50 34.0% | | |
| 4-11 | 36.3% | 19-56 33.9% | 6 ft Lane Turnaround by Jeffries, Betsy, made | 4 1:24 | *41-45 | 2-3 | 66.6% 11-15 73.3% |
| 3 | 12 | Assist by Bramer, Cathy | 4 1:01 | | | | |
| 5 | 8 | Foul on Gonterman, S. | 4 1:01 | | | | |
| | | | 4 1:01 | | | | |
| | | Sub In: Knight, Leslie Out: Gonterman, S. | 4 1:01 | 41-46* | Pennington, L.A., 1 & Bonus made 1st missed 2nd | 3-4 | 75.0% 12-17 70.5% |

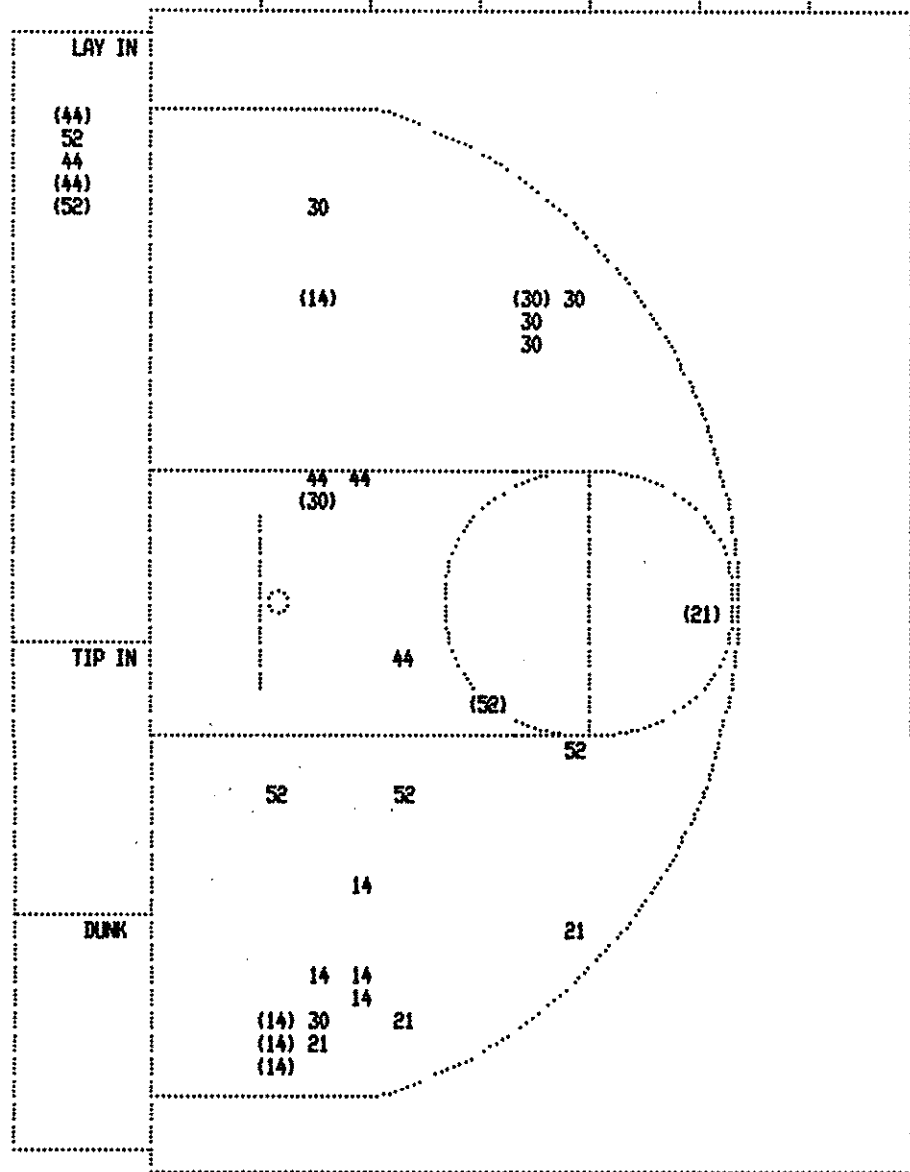
Boone County "Lady Rebels" vs East Hardin "Lady Rebs"
 2nd Half Play by Play

Tip off at 7:30 p.m. on 03/24/88 at State Tourney, Frankfort
 Produced by the K.H.S.A.A. Stat Crew with FINAL III™

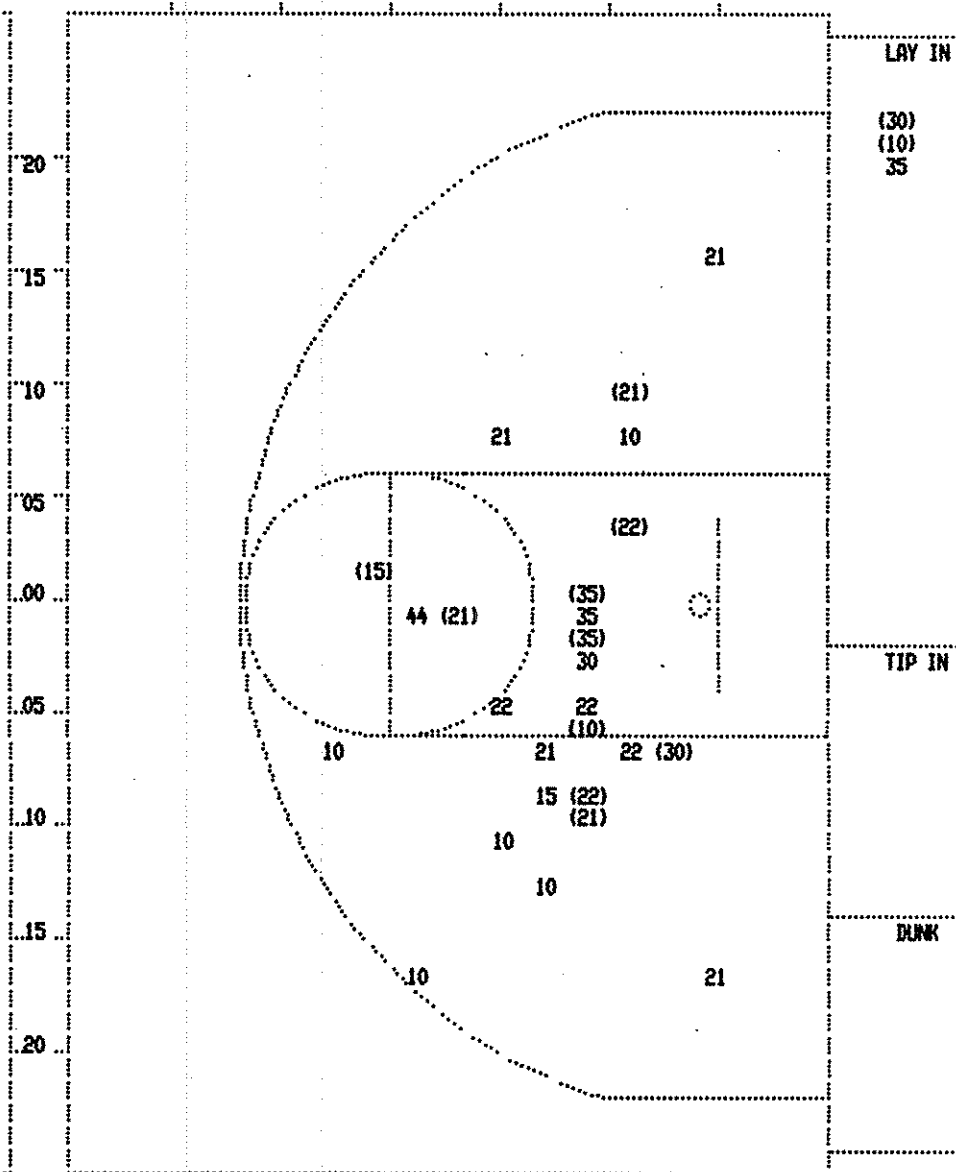
PAGE : 1

| Player | Team | East Hardin | Time | Score | Boone County | Player | Team |
|-----------------------------|-------|--|------------------------------------|---|---|--------|-------------|
| Gillock, Chanin, Gonterman, | | S., Jeffries, Betsy, Kuchowicz, R., Brawner, Cathy | | | Nickerson, Jill, Pennington, L.A., Davis, Amy, Poland, Michelle, Murphy, Sara | | |
| 5-10 | 50.0% | 12-33 36.3% | 3 6:53 | *26-27 | | | |
| 2 | | 1 Foul on Brawner, Cathy | 3 6:21 | | | | |
| 3-7 | 42.8% | 13-34 38.2% | 3 6:03 | *28-27 | | | |
| 1 | | 7 Assist by Brawner, Cathy | 3 5:43 | | Sub In: Morrison, Julie Out: Murphy, Sara | | |
| | | REB: 22 A: 7 BLK: 1 TO: 6 PF: 1 | 3 5:43 | | REB: 27 A: 4 BLK: 0 TO: 11 PF: 0 | | |
| | | S: 2 FT: 2-7 28.5% FG: 13-34 38.2% | T I M E - O U T Boone County No. 1 | | S: 3 FT: 3-6 50.0% FG: 12-33 36.3% | | |
| 2 | | 2 Foul on Kuchowicz, R. | 3 4:56 | | | | |
| | | REB: 25 A: 7 BLK: 1 TO: 9 PF: 2 | 3 4:27 | 28-29* 12 ft Lane Jump shot by Nickerson, Jill | 2-5 | 40.0% | 13-38 34.2% |
| | | S: 2 FT: 2-7 28.5% FG: 13-36 36.1% | 3 4:13 | 28-31* 14 ft Right Base Line Jump shot by Nickerson, Jill | 3-6 | 50.0% | 14-39 35.8% |
| | | No. 1 East Hardin T I M E - O U T | 3 3:43 | 28-33* Driving Layup by Morrison, Julie | 3-9 | 33.3% | 15-40 37.5% |
| | | | 3 3:31 | | REB: 30 A: 4 BLK: 0 TO: 11 PF: 0 | | |
| | | | T I M E - O U T | | S: 5 FT: 3-6 50.0% FG: 15-40 37.5% | | |
| 4-9 | 44.4% | 14-38 36.8% | 3 3:20 | *30-33 | | | |
| 2 | | 8 Layup Off Fast Break by Kuchowicz, R. | 3 3:06 | | | | |
| 3 | | 3 Assist by Brawner, Cathy | 3 3:06 | 30-35* Morrison, Julie, 2 Free Throws made both | 3-5 | 60.0% | 5-8 62.5% |
| | | Foul on Gonterman, S. | 3 2:31 | Foul on Nickerson, Jill | 2 | | 1 |
| | | Sub In: Knight, Leslie Out: Brawner, Cathy | 3 1:32 | Sub In: Rich, Amy Out: Morrison, Julie | | | |
| | | | 3 1:32 | | | | |

FIRST HALF SHOT CHART Produced by the K.H.S.A.A. Stat Crew with FINAL III™



| East Hardin | | Player | | Player | |
|-----------------|-------------|----------|------------|------------|---------|
| 30 - Gonterman, | 2 / 7 28.5% | | | | |
| 52 - Kuchowicz, | 2 / 6 33.3% | | | | |
| 44 - Jeffries, | 2 / 6 33.3% | | | | |
| 21 - Gillock, C | 1 / 4 25.0% | | | | |
| 14 - Brawner, C | 4 / 8 50.0% | | | | |
| Layups | 1-9 Ft | 10-15 Ft | Over 15 Ft | 3 Pointers | Total |
| 3 / 5 | 2 / 7 | 1 / 3 | 5 / 16 | | 11 / 31 |
| 60.0% | 28.6% | 33.3% | 31.3% | | 35.5% |



| Boone County | | Player | | Player | |
|------------------|-------------|-----------------|-------------|------------|---------|
| 15 - Nickerson, | 1 / 2 50.0% | 35 - Rich, Amy | 2 / 4 50.0% | | |
| 30 - Poland, Mic | 2 / 3 66.6% | 44 - Murphy, Sa | 0 / 1 0.0% | | |
| 22 - Davis, Amy | 2 / 5 40.0% | | | | |
| 10 - Morrison, | 2 / 7 28.5% | | | | |
| 21 - Pennington | 3 / 7 42.8% | | | | |
| Layups | 1-9 Ft | 10-15 Ft | Over 15 Ft | 3 Pointers | Total |
| 2 / 3 | 7 / 14 | 3 / 8 | 0 / 4 | | 12 / 29 |
| 66.7% | 50.0% | 37.5% | 0.0% | | 41.4% |

Boone County "Lady Rebels" vs East Hardin "Lady Rebs"
1st Half Play by Play

Tip off at 7:30 p.m. on 03/24/88 at State Tourney, Frankfort
Produced by the K.H.S.A.A. Stat Crew with FINAL III™

PAGE : 2

| Player | Team | East Hardin |
|---------------------------|-------|--|
| Gillock, Chanin, Brawner, | | Cathy, Jeffries, Betsy, Kuchowicz, R., Gonterman, S. |
| 1 | 3 | Foul on Kuchowicz, R. |
| 2-5 | 40.0% | 7-18 38.8% Follow Layup by Jeffries, Betsy |
| 1-1 | 100% | 1-4 25.0% Jeffries, Betsy, 1 Free Throw made |
| 3-6 | 50.0% | 8-21 38.0% 18 ft Left Base Line Jump shot by Brawner, Cathy |
| 3 | | 4 Assist by Gillock, Chanin |
| 2-4 | 50.0% | 9-22 40.9% Layup Off Fast Break by Kuchowicz, R. |
| 1 | 4 | Foul on Gonterman, S. |
| 2 | 5 | Foul on Gonterman, S. |
| 2 | 6 | Foul on Jeffries, Betsy |
| 0-2 | 00.0% | 1-5 20.0% Kuchowicz, R., 1 & Bonus missed 1st |
| 4-8 | 50.0% | 10-28 35.7% 18 ft Left Base Line Jump shot by Brawner, Cathy |
| 4 | | 5 Assist by Gillock, Chanin |
| 2-3 | 66.6% | 2-7 28.5% Jeffries, Betsy, 2 Free Throws made 1st missed 2nd |
| 2-6 | 33.3% | 11-30 36.6% 17 ft Right Side Jump shot by Gonterman, S. |
| 5 | | 6 Assist by Gillock, Chanin |
| | | Sub In: Jeffries, Missy Out: Brawner, Cathy |

| Time | Score | Boone County | Player | Team |
|--------|--------|--|--------|-------------------|
| | | Pennington, L.A., Nickerson, Jill, Morrison, Julie, Davis, Amy, Poland, Michelle | | |
| | | Ball to Lady Rebels | | |
| 2 7:43 | 12-17* | 14 ft Lane Jump shot by Nickerson, Jill | 1-1 | 100% 8-17 47.0% |
| | | Assist by Morrison, Julie | 2 | 4 |
| 2 7:00 | | | | |
| 2 6:55 | 12-19* | 6 ft Lane Bank by Morrison, Julie | 2-6 | 33.3% 9-20 45.0% |
| 2 6:30 | *14-19 | | | |
| 2 6:30 | | Foul on Davis, Amy | 2 | 6 |
| 2 6:30 | *15-19 | | | |
| 2 5:08 | *17-19 | | | |
| 2 4:46 | 17-21* | 4 ft Lane Turnaround by Davis, Amy | 2-4 | 50.0% 10-22 45.4% |
| 2 4:34 | *19-21 | | | |
| 2 4:30 | | Sub In: Rich, Amy Out: Poland, Michelle | | |
| 2 4:30 | | Sub In: Murphy, Sara Out: Morrison, Julie | | |
| 2 3:20 | 19-23* | 4 ft Lane Follow by Rich, Amy | 1-2 | 50.0% 11-24 45.8% |
| 2 3:00 | | | | |
| 2 2:45 | | | | |
| 2 2:45 | | Sub In: Poland, Michelle Out: Murphy, Sara | | |
| 2 2:45 | 19-24* | Davis, Amy, 1 & Bonus made 1st missed 2nd | 1-2 | 50.0% 2-5 40.0% |
| 2 2:41 | 19-26* | 4 ft Lane Bank by Rich, Amy | 2-3 | 66.6% 12-25 48.0% |
| 2 2:40 | | | | |
| 2 2:40 | 19-27* | Rich, Amy, 1 Free Throw made | 1-1 | 100% 3-6 50.0% |
| 2 2:30 | | Foul on Pennington, L.A. | 1 | 7 |
| 2 2:30 | | | | |
| 2 2:29 | | Sub In: Morrison, Julie Out: Pennington, L.A. | | |
| 2 2:29 | *21-27 | | | |
| 2 1:34 | | Foul on Rich, Amy | 1 | 8 |
| 2 1:34 | *22-27 | | | |
| 2 1:15 | *24-27 | | | |
| 2 0:02 | | | | |

Boone County "Lady Rebels" vs East Hardin "Lady Rebs"
1st Half Play by Play

Tip off at 7:30 p.m. on 03/24/88 at State Tourney, Frankfort
Produced by the K.H.S.A.A. Stat Crew with FINAL III

PAGE : 1

| Player | Team | East Hardin | Time | Score | Boone County | Player | Team |
|--|-------|-------------|---|-------------|---|--------|-------|
| Gonterman, S., Kuchowicz, R., Jeffries, Betsy, Knight, Leslie, Gillock, Chanin | | | | | Nickerson, Jill, Poland, Michelle, Davis, Amy, Pennington, L.A., Murphy, Sara | | |
| 1-1 | 100% | 1-2 50.0% | 9 ft Lane Turnaround by Kuchowicz, R. | 1 7:03 *2-0 | Ball to Lady Rebels | | |
| 0-1 | 00.0% | 0-1 00.0% | Kuchowicz, R., 1 Free Throw missed | 1 7:01 | Foul on Murphy, Sara | | |
| 1-1 | 100% | 2-3 66.6% | Driving Layup by Jeffries, Betsy | 1 7:01 | | | |
| | | | Assist by Gillock, Chanin | 1 6:53 | 2-2* 10 ft Left Side Jump shot by Pennington, L.A. | 1-2 | 50.0% |
| | | | | | Assist by Nickerson, Jill | 1-2 | 50.0% |
| | | | | 1 6:20 | *4-2 | | |
| | | | | 1 5:54 | Sub In: Morrison, Julie Out: Murphy, Sara | | |
| | | | | 1 5:41 | 4-4* Driving Layup by Poland, Michelle | 1-1 | 100% |
| | | | | | Assist by Morrison, Julie | 2-5 | 40.0% |
| | | | | 1 5:08 | 4-6* Layup Off Fast Break by Morrison, Julie | 1-2 | 50.0% |
| | | | | | Assist by Pennington, L.A. | 3-6 | 50.0% |
| | | | | 1 5:08 | | | |
| | | | Foul on Jeffries, Betsy | 1 5:08 | Morrison, Julie, 1 Free Throw missed | 0-1 | 00.0% |
| | | | | 1 5:00 | Foul on Nickerson, Jill | 0-1 | 00.0% |
| | | | | 1 4:39 | 4-8* 9 ft Right Side Bank by Davis, Amy | 1-2 | 50.0% |
| | | | | 1 4:31 | Foul on Morrison, Julie | 4-8 | 50.0% |
| | | | Sub In: Brawner, Cathy Out: Knight, Leslie | 1 4:31 | | | |
| | | | | 1 3:56 | 4-10* 9 ft Right Side Jump shot by Pennington, L.A. | 2-4 | 50.0% |
| | | | | 1 3:32 | 4-12* 6 ft Lane Follow by Poland, Michelle | 2-2 | 100% |
| 1-1 | 100% | 3-8 37.5% | 14 ft Right Base Line Jump shot by Brawner, Cathy | 1 3:20 | *6-12 | 5-9 | 55.5% |
| | | | Assist by Kuchowicz, R. | | | 6-11 | 54.5% |
| | | | | 1 3:03 | Player Control Foul on Davis, Amy | | |
| | | | | 1 3:03 | Sub In: Murphy, Sara Out: Poland, Michelle | | |
| | | | | 1 2:29 | Sub In: Rich, Amy Out: Nickerson, Jill | | |
| 2-2 | 100% | 4-11 36.3% | 20 ft Left Base Line Jump shot by Brawner, Cathy | 1 2:29 | *8-12 | | |
| | | | Assist by Gillock, Chanin | | | | |
| | | | Foul on Brawner, Cathy | 1 1:59 | | | |
| | | | | 1 1:57 | 8-13* Morrison, Julie, 2 Free Throws made 1st missed 2nd | 1-3 | 33.3% |
| | | | | 1 1:30 | *10-13 | 1-3 | 33.3% |
| 1-3 | 33.3% | 5-13 38.4% | 18 ft Circle Jump shot by Gillock, Chanin | 1 1:18 | 10-15* 10 ft Lane Turnaround by Pennington, L.A. | 3-5 | 60.0% |
| 1-3 | 33.3% | 6-15 40.0% | 6 ft Lane Follow by Gonterman, S. | 1 0:40 | *12-15 | 7-13 | 53.8% |
| | | | | 1 0:25 | Sub In: Poland, Michelle Out: Rich, Amy | | |
| | | | | 1 0:12 | Foul on Poland, Michelle | | |
| 0-2 | 00.0% | 0-3 00.0% | Brawner, Cathy, 2 Free Throws missed both | 1 0:12 | Sub In: Nickerson, Jill Out: Poland, Michelle | | |
| | | | | 1 0:12 | | | |

BOX SCORE: * OFFICIAL FIRST HALF * Date: 03-24-88 Site: State Tourney, Frankfort Attendance: 3850
 Team: Boone County

| NO. | NAME | TOTAL FG | | 3-POINT | | FT | FTA | REB | | | PF | TP | A | TO | BLK | S | MIN |
|--------------|------------------|-----------|-----|---------|-----|--------|-------|-------|------|------|------|----------|---|----|------|-------|-------|
| | | FG | FGA | FG | FGA | | | O | D | T | | | | | | | |
| 15 | Nickerson, Jill | 1 | 2 | 0 | 0 | 0 | 0 | 0 | 8 | 8 | 1 | 2 | 1 | 4 | 0 | 0 | 14 |
| 30 | Poland, Michelle | 2 | 3 | 0 | 0 | 0 | 0 | 2 | 1 | 3 | 1 | 4 | 0 | 1 | 0 | 0 | 11 |
| 22 | Davis, Amy | 2 | 5 | 0 | 0 | 1 | 2 | 3 | 3 | 6 | 2 | 5 | 0 | 3 | 0 | 1 | 16 |
| 21 | Perrington, L.A. | 3 | 7 | 0 | 0 | 0 | 0 | 1 | 3 | 4 | 1 | 6 | 1 | 1 | 0 | 0 | 14 |
| 44 | Murphy, Sara | 0 | 1 | 0 | 0 | 0 | 0 | 0 | 0 | 0 | 1 | 0 | 0 | 0 | 0 | 0 | 7 |
| 10 | Morrison, Julie | 2 | 7 | 0 | 0 | 1 | 3 | 1 | 0 | 1 | 1 | 5 | 2 | 2 | 0 | 1 | 12 |
| 35 | Rich, Amy | 2 | 4 | 0 | 0 | 1 | 1 | 2 | 1 | 3 | 1 | 5 | 0 | 0 | 0 | 0 | 6 |
| TEAM | | TOTALS | | 0 / 0 | | 3 | 6 | 9 | 16 | 25 | 8 | 27 | 4 | 11 | 0 | 2 | 80 |
| Percentages: | | HALF----- | | FG | | 12/ 29 | 41.4% | 3-PT. | | 0/ 0 | 0.0% | Rebounds | | FT | | 3/ 6 | 50.0% |
| | | Period 1 | | 7/ 16 | | 43.8% | | | 0/ 0 | 0.0% | | | | | 1/ 3 | 33.3% | |
| | | Period 2 | | 5/ 13 | | 38.5% | | | 0/ 0 | 0.0% | | | | | 2/ 3 | 66.7% | |

Team: East Hardin

| NO. | NAME | TOTAL FG | | 3-POINT | | FT | FTA | REB | | | PF | TP | A | TO | BLK | S | MIN |
|--------------|-----------------|-----------|-----|---------|-----|--------|-------|-------|------|------|------|----------|---|----|------|-------|-------|
| | | FG | FGA | FG | FGA | | | O | D | T | | | | | | | |
| 30 | Gonterman, S. | 2 | 7 | 0 | 0 | 0 | 0 | 2 | 2 | 4 | 2 | 4 | 0 | 2 | 0 | 0 | 16 |
| 52 | Kuchowicz, R. | 2 | 6 | 0 | 0 | 0 | 2 | 1 | 3 | 4 | 1 | 4 | 1 | 1 | 0 | 0 | 16 |
| 44 | Jeffries, Betsy | 2 | 6 | 0 | 0 | 2 | 3 | 2 | 5 | 7 | 2 | 6 | 0 | 0 | 0 | 1 | 16 |
| 11 | Knight, Leslie | 0 | 0 | 0 | 0 | 0 | 0 | 0 | 0 | 0 | 0 | 0 | 1 | 0 | 0 | 0 | 3 |
| 21 | Gillock, Charin | 1 | 4 | 0 | 0 | 0 | 0 | 1 | 0 | 1 | 0 | 2 | 5 | 0 | 0 | 0 | 16 |
| 14 | Brawner, Cathy | 4 | 8 | 0 | 0 | 0 | 2 | 0 | 0 | 0 | 1 | 8 | 0 | 1 | 0 | 1 | 13 |
| TEAM | | TOTALS | | 0 / 0 | | 2 | 7 | 8 | 11 | 19 | 6 | 24 | 6 | 5 | 0 | 2 | 80 |
| Percentages: | | HALF----- | | FG | | 11/ 31 | 35.5% | 3-PT. | | 0/ 0 | 0.0% | Rebounds | | FT | | 2/ 7 | 28.6% |
| | | Period 1 | | 6/ 15 | | 40.0% | | | 0/ 0 | 0.0% | | | | | 0/ 3 | 0.0% | |
| | | Period 2 | | 5/ 16 | | 31.3% | | | 0/ 0 | 0.0% | | | | | 2/ 4 | 50.0% | |

OFFICIALS: Jan Baker, Jackie Cupp, Alt.-S. Higdon
 Technicals: None

SCORE BY PERIODS

| | | | | |
|--------------|----|----|---|----|
| Boone County | 15 | 12 | = | 27 |
| East Hardin | 12 | 12 | = | 24 |

Produced by the K.H.S.A.A. Stat Crew with FINAL III**